

## Natural Resources Canada – Canadian Forest Service

**Location:** Canada

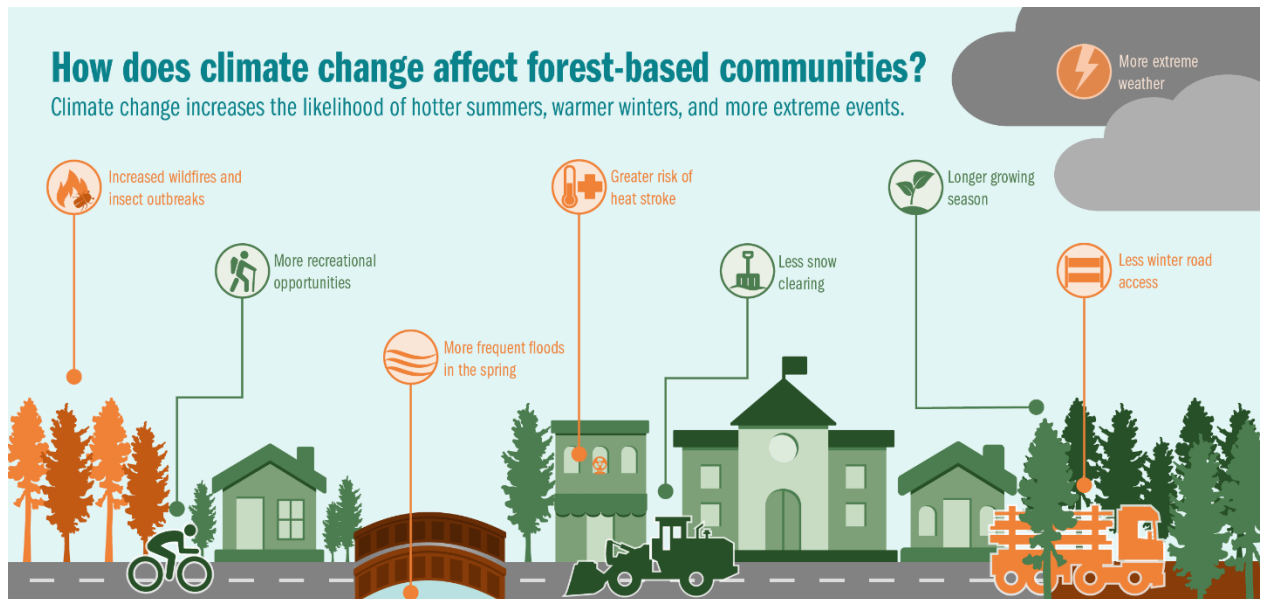
**Project:** Pathways to a Climate Resilience Community: A Climate Change Vulnerability Assessment Framework – infographics and figures

**Industries:** Infographics, Environmental & Natural Sciences, Government

**Completion Date:** 2020

### PROJECT SUMMARY

The Canadian Forest Service engaged Fuse Consulting to review the document, “Pathways to a Climate Resilience Community: A Climate Change Vulnerability Assessment Framework - A Guidebook for Canadian Forest-based Communities,” and develop figures to adapt and improve upon existing figures using a unified style, including a full-page roadmap for creating a vulnerability assessment and adaptation plan.



## A Roadmap for Creating a Climate Vulnerability Assessment and Adaptation Plan for Forest-based Communities

1

### Begin the Process

- ▶ Identify current community plans that could integrate climate resilience thinking
- ▶ Bring people together to look at the community through a climate change lens
- ▶ Decide Why, Who, and How to undertake the process and identify the community's goals

### Outcome

- ▶ A team and a workplan

### Monitor, Evaluate and Refine

- ▶ Have the community's vision, goals or objectives changed?

2

### Understand and Explain Why

- ▶ Create a community climate change profile using local, traditional, and expert knowledge
  - ▶ Current climate
  - ▶ Recent climate changes: what events or conditions have stressed the community?
  - ▶ Possible future climate changes and how they might affect the community
- ▶ Educate and engage with the community on the topic of climate change

### Outcome

- ▶ Community climate profile and a plan for education and outreach

### Monitor, Evaluate and Refine

- ▶ Is there new climate information?

3

### Identify and Assess Impacts

- ▶ Identify actual and possible climate change impacts on the environment and their implications for the community
  - ▶ Involve relevant community members and experts in the process
  - ▶ Consider global climate factors and local non-climate factors

### Outcome

- ▶ Impact summary

### Monitor, Evaluate and Refine

- ▶ Are the impacts different from what was expected?

4

### Identify the Highest Priorities

- ▶ Initial priority scan
  - ▶ High priority topics ▶▶ more detailed assessment
- ▶ Assess the community's adaptive capacity
- ▶ Decision point: are further assessments and/or adaptation required?
- ▶ Complete a vulnerability rating for the highest priorities

### Outcome

- ▶ Vulnerability ratings for highest priorities

### Monitor, Evaluate and Refine

- ▶ Has the community's adaptive capacity changed?
- ▶ Has new information changed the actions or their level of priority?

5

### Create a Climate Adaptation Action Plan

- ▶ Identify possible adaptation actions and assign priorities
- ▶ Develop a plan for implementing these actions

### Outcome

- ▶ Community Climate Adaptation Action Plan and Implementation

### Monitor, Evaluate and Refine

- ▶ Are actions being implemented as planned?
- ▶ Are they achieving their goals?

